



Photo credits: IUCN / Melissa Mavhenge

BUZI, PUNGWE, SAVE (BuPuSa) RIVER BASINS

Background

The Buzi, Pungwe and Save basins are exclusively shared by Mozambique and Zimbabwe and drain into the Indian Ocean. Cooperation in the BuPuSa basins is driven by water resources planning, development and management projects which require the two countries to cooperate.

Key achievements to date

- Development of successful GEF project on transboundary water management in the BuPuSa.
- Support to the development of three bi-national water agreements between Mozambique and Zimbabwe, for each of the river basins
- Setting the framework for a Tri-basin institution to facilitate cooperation and coordinate action
- Establishment of a BuPuSa River Basin Organisation, with an accompanying Hosting and Establishment Agreement
- Development of a Data Sharing Agreement between Mozambique and Zimbabwe on the BuPuSa

BRIDGE implementation

BRIDGE has operated in the basin since 2014. Region-wide, it aims to support the implementation of the region's water cooperation frameworks to improve water cooperation, peace and investment. Basin-wide, it aims to translate transboundary water cooperation into action on the ground for the maintenance of ecosystem services and financial sustainability.

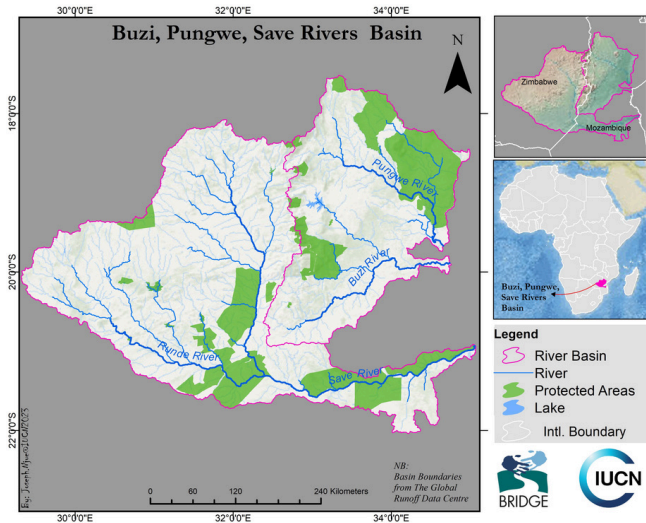
Basin objectives for Phase 5

- BuPuSa Stakeholder Engagement Strategy to set the basis for and establish a Basin Stakeholder Platform and operationalise it
- Mainstreaming Gender Equality and Social Inclusion (GESI) in the basin workplans, programmes and strategies
- Operationalising the Commission Secretariat to start implementation of activities
- Support resource mobilisation and visibility for the newly established BuPuSa RBO



BRIDGE: Building River Dialogue and Governance

Securing sustainable development, livelihoods and peace through transboundary water cooperation



Basin at glance

Total area (km²): 162,051

Population: 1,199,567

Climate zone: tropical; moderated by altitude; rainy season

Rainfall (mm/yr): 2,000

Countries sharing: Mozambique and Zimbabwe

BRIDGE operating in the basin since: 2014

CROSS-SECTORAL AND INSTITUTIONAL COLLABORATION

Through IUCN, through BRIDGE has collaborated with numerous partners to enhance integrated water resources management (IWRM) in the basin. The Southern African Development Community (SADC) is a key partner, as water cooperation in the region finds its footing in the SADC Water Protocol.

To better understand the water demands and water users in the basin, IUCN has partnered with WATERNET to increase capacities of basin stakeholders in e-flows monitoring (BRIDGE 3) and data sharing. BRIDGE also has a close relationship with the Global Water Partnership Southern Africa (GWP-SA), through the implementation of a Global Environment Facility (GEF) project in the basin, which was developed through BRIDGE.

Throughout the process, IUCN has received invaluable support from the National Basin Management Authorities in Mozambique (ARA-Centro), and Zimbabwe (ZINWA-Save), as well as the National Ministries and Departments responsible for Water. Their contributions have been instrumental in ensuring the success of these initiatives and in promoting sustainable and equitable water governance in the BuPuSa Basins.

BRIDGE activities in the basin have been complemented with funds from the US State funded Shared Waters Cooperation Facility project.

Schweizerische Eidgenossenschaft
Confédération suisse
Confederazione Svizzera
Confederaziun svizra

Swiss Agency for Development
and Cooperation SDC

BRIDGE is made possible through the generous financial support of the Swiss Agency for Development and Cooperation (SDC). This fifth phase runs for a 4-year period (2022-2026).

Additional information

BRIDGE website:
www.waterandnature.org/initiatives/bridge

Water Law and Governance website:
www.waterlawandgovernance.org/bridge/

Social media

@IUCN_Water (Twitter)
@IUCN Water and Land Management (LinkedIn)

BRIDGE contacts

Davison Saruchera
Davison.Saruchera@iucn.org
BRIDGE Project Coordinator - Southern African Region