



Photo credits: IUCN

## SIO-MALABA-MALAKISI BASIN

### Background

The Sio-Malabo-Malakisi is a transboundary sub-basin of the Nile River, with the Sio originating from near Bungoma town in Kenya and flows along the Kenya-Uganda border and discharges into Lake Victoria. The Malaba-Malakisi originated from Mt. Elgon and drains into Lake Kyoga. Agriculture is the major socio-economic activity in the sub-basin but poor agricultural practices have resulted in extensive catchment degradation, intensive land cultivation and indiscriminate sand harvesting of river banks.

### Basin objectives for Phase 5

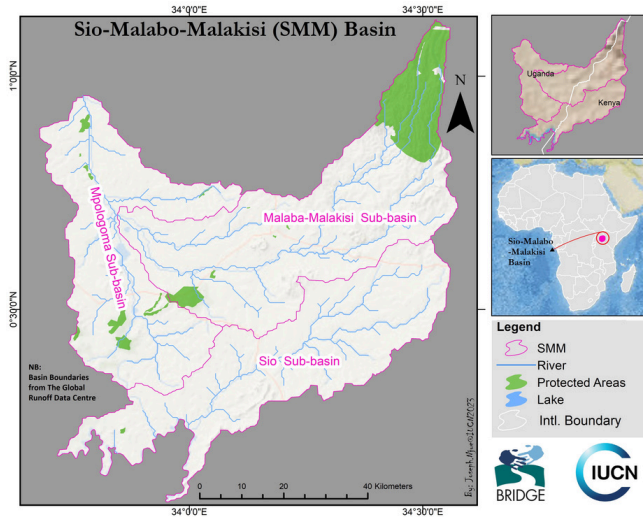
- Support the resource mobilisation and implementation of prioritised projects
- Facilitate the definition of legal arrangements between Kenya and Uganda for the implementation of prioritised transboundary projects such as the Angololo Dam

### BRIDGE implementation

BRIDGE has operated in the basin since 2016. Region-wide, it aims to strengthen institutional and policy frameworks for transboundary water management and development. Basin-wide, it aims to strengthen institutional and policy frameworks for SMM transboundary basin management and development and to implement cooperation actions.

### Key achievements to date

- Development of a Bilateral Agreement on transboundary water management and cooperation between Kenya and Uganda (still to be ratified).
- Piloted BRIDGE Benefit Sharing Methodology which culminated in the identification of four clusters of priority projects for basin development.
- Development of SMM Investment Plan and Financial Sustainability Strategy.



## Basin at glance

Total area (km<sup>2</sup>): 4,000

Population: 4 million

Climate zone: Humid and sub-humid

Rainfall (mm/yr): 900-1,800 (depending on location)

Countries sharing: Kenya and Uganda

BRIDGE operating in the basin since: 2016

## CROSS-SECTORAL AND INSTITUTIONAL COLLABORATION

Through BRIDGE, IUCN has collaborated with numerous partners to enhance integrated water resources management (IWRM) in the basin. The Nile Equatorial Lakes Subsidiary Programme (NELSAP), which is the investment wing of the Nile Basin Initiative, is a key partner, together with the Lake Victoria Basin Commission (LVBC). The Bilateral Agreement BRIDGE has supported between Kenya and Uganda builds on a MoU set up under NELSAP - but with the aim to it a sustainable arrangement that will survive outside development aid funded projects.

To better understand the legal arrangements and connections to international water conventions, IUCN partnered with the UN Economic Commission for Europe (UNECE) during phase 3.

Throughout the process, IUCN has received invaluable support from the Ministries responsible for Water in Kenya and Uganda, and the Secretariats of the East African Community (EAC), LVBC and the Intergovernmental Authority on Development (IGAD). Their contributions have been instrumental in ensuring the success of these initiatives and in promoting sustainable and equitable water governance in the SMM basins.

BRIDGE activities in the basin were complemented with funds from the US State Department from 2016-2019.

### Additional information

BRIDGE website:  
[www.waterandnature.org/initiatives/bridge](http://www.waterandnature.org/initiatives/bridge)

Water Law and Governance website:  
[www.waterlawandgovernance.org/bridge/](http://www.waterlawandgovernance.org/bridge/)

### Social media

@IUCN\_Water (Twitter)  
@IUCN Water and Land Management (LinkedIn)

### BRIDGE contacts

Details of key contact person(s) in the basin  
John Owino  
John.Owino@iucn.org

BRIDGE Project Coordinator - Horn of Africa