



# SUSTAIN-Africa

## Sustainability and Inclusion Strategy for Growth Corridors in Africa



SUSTAIN-Africa is an initiative to implement Sustainable Development Goals in African growth corridors. The aim is to facilitate greening of growth that is inclusive and climate-resilient. SUSTAIN-Africa works at the local, national and continental levels, linking practice on the ground to policy change at corridor and Africa-wide levels. SUSTAIN integrates water, land and ecosystem management with sustainable business to demonstrate inclusive green growth using the landscapes approach.



-  **Water security** - solutions for climate-resilient, sustainable water management for livelihoods, production and ecosystems, reducing water-related risks for communities and business
-  **Climate change resilience** – working with farmers, communities and business on the management and restoration of landscapes to lower risks to food security, adapt to climate change, and support inclusive new value chains with low-carbon impact
-  **Green business innovation** – collaboration with small and large business on the essential contribution of ecosystem services to development and economic growth
-  **Inclusion** - strengthening the rights-based approach and empowering local communities to participate, influence and benefit from corridor development
-  **Partnerships** – building synergies among communities, business, civil society and government for long-term results on the ground and for better policies and business strategies.

The SUSTAIN-Africa initiative works at three levels (see fig 1):

- **On the ground**, SUSTAIN works in selected landscapes and river basins to demonstrate how integrated land and water planning, investment and management together with concrete new business opportunities for communities and smallholders, can result in more inclusive, greener growth.
- **At corridor and national levels**, SUSTAIN promotes partnerships between businesses, communities and civil society to generate investment. Based on evidence from the ground, SUSTAIN promotes changes in public policies and how they are implemented, and in how businesses and investors operate with rural communities.
- **Africa-wide and internationally** to share and scale-up results, SUSTAIN convenes high-level dialogues among civil society, business, investors and governments to reframe public policies and business strategies to support strong, sustainable, and socially inclusive growth.

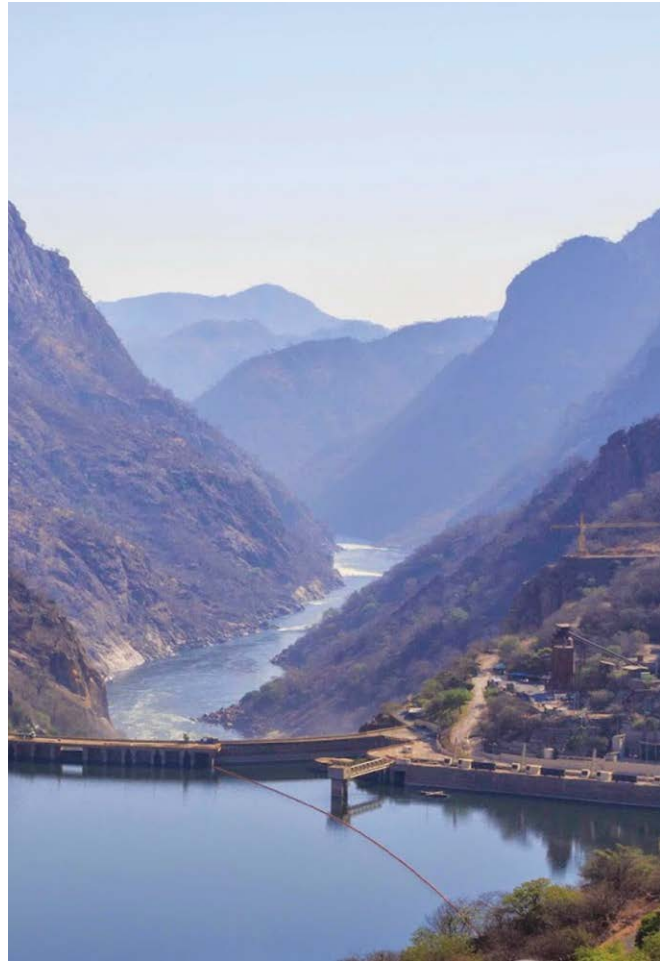
## New Framework for Sustainable Development in Growth Corridors

SUSTAIN-Africa aims to use partnerships to ensure that investments flowing into growth corridors include solutions for the sustainability of water, land and ecosystems that are socially inclusive and build resilience to climate change.

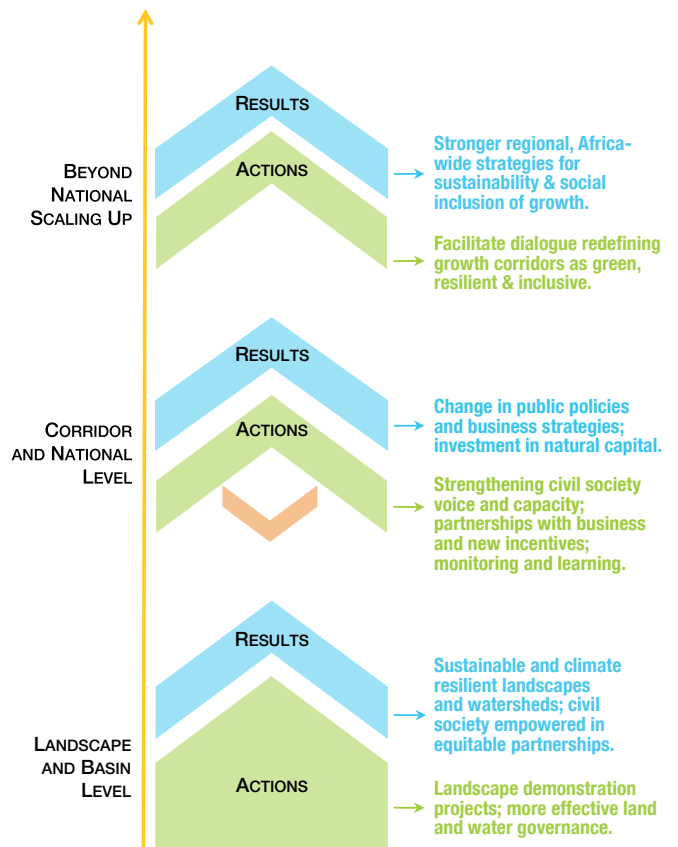
SUSTAIN-Africa is demonstrating the landscape approach to inclusive green growth in two African growth corridors. Activities are increasing knowledge, skills and capacities among communities, business and government on how water, land and ecosystem management supports growth. SUSTAIN is working in the Southern Agricultural Growth Corridor in Tanzania (SAGCOT), and the Zambezi Valley Development Corridor in Mozambique.

## Tanzania: Ihemi-Kilombero and Sumbawanga (SAGCOT)

**Ihemi/Kilombero.** The African Wildlife Foundation (AWF) leads implementation of SUSTAIN in Ihemi and Kilombero. AWF and partners work in the Magomberero Forest and Kilombero Valley landscapes to pilot agricultural and nature-based value chains with communities and farmers, while applying climate-smart agriculture alongside the management of wildlife corridors. AWF facilitates partnerships between farmers and agribusiness to develop incentives for sustainability through cooperation in accessing markets. They work alongside the Rufiji Basin Water Office to implement the Rufiji IWRM Development Plan through application of water allocation mechanisms and environmental flows with rural communities and business. As a result, AWF and their partners are jointly learning and sharing their best practices within landscapes, across the corridor and beyond.



**Fig 1: SUSTAIN-Africa's strategy for change in landscapes, growth corridors and Africa-wide**



**Sumbawanga.** Under the direction of SNV-Tanzania, SUSTAIN is facilitating multi-stakeholder, inclusive natural resource governance in the Sumbawanga-Mtowissa and Kassanga-Matai landscapes. SUSTAIN works with local government to link water management to land-use planning and climate change adaptation. It facilitates dialogue on integrating payments for water and ecosystem services. SUSTAIN is supporting the Lake Rukwa Basin Water Office (LRBWO) to implement the Tanzania Water Sector Development Programme, including demonstration of effective water allocation strategies in the Kalambo, Saesi and Katuma catchments according to priorities in the IWRM Development Plan. SUSTAIN also works with the private sector to promote more sustainable and inclusive business practices within the landscape.

In each of the demonstration landscapes, SUSTAIN facilitates integration of sustainable and climate-smart agricultural practices, renewable energy technologies and business strategies for small and medium enterprises (SMEs). As a partner of SAGCOT Centre Ltd., SUSTAIN promotes greater transparency and works with investors to guide application of environmental and social safeguards and standards.

## Mozambique: Zambezi Valley Development Corridor

SUSTAIN-Africa is working in Mozambique with the Zambezi Valley Development Agency, building partnerships to develop agricultural and nature-based value chains with communities and farmers. By working at landscape-level, SUSTAIN helps communities, government and business to improve water management and climate change adaptation while supporting, community-based eco-tourism and wildlife management, especially in the new Magoe National Park.

## The Knowledge-to-Impact Framework

SUSTAIN's Knowledge-to-Impact Framework facilitates the collection, dissemination and application of knowledge generated by SUSTAIN-Africa. It aims to (1) build stakeholder capacities; (2) facilitate the exchange of lessons and best practices on sustainable and inclusive growth; and (3) disseminate the programme's knowledge to shape and influence government and business policies and strategies in growth corridors and at an Africa-wide level. The Knowledge-to-Impact Framework targets scaling-up results from SUSTAIN-Africa's demonstration landscapes through dialogue and consensus building among civil society, business and governments.

## Partnerships for Green and Inclusive Growth

SUSTAIN-Africa facilitates partnerships among rural communities, businesses, governments, civil society organisations and development partners.



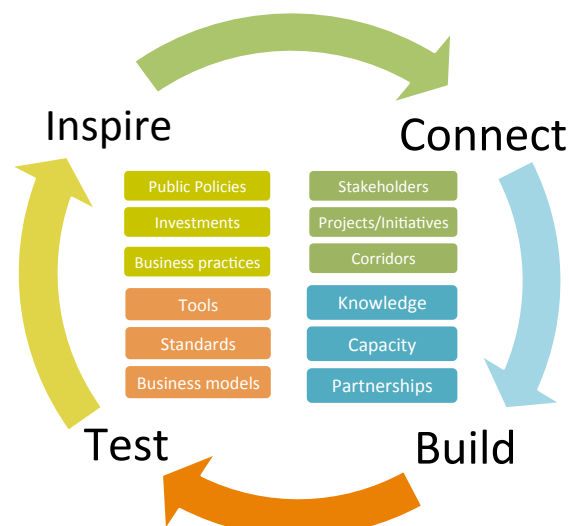
## Working with Business

By engaging in the SUSTAIN Green Business Innovation Hub, companies contribute to shaping green and inclusive growth in Africa. They access the partners and knowledge they need to integrate communities, biodiversity and natural capital values into their investments and daily operations, to lower risks and improve sustainability and climate-resilience.

SUSTAIN helps business to systematically assess, minimize and mitigate impacts on water, land and ecosystems and related risks (see fig 2). SUSTAIN's Action Plan for Business focuses on four priorities that:

- **connect** business with other progressive stakeholders and initiatives on sustainable and inclusive growth
- **build** partnerships among business, civil society and government to enhance knowledge and improve solutions for water and food security and climate change resilience
- **test** new business models, which empower rural communities and integrate ecosystems and natural capital values for inclusive green growth
- **inspire** innovative business practices that create incentives for sustainable water, land and ecosystem management.

**Fig 2: SUSTAIN Action Plan for Business**



## Supporting Governments

SUSTAIN works in partnership with governments to support implementation of water, land, environmental, biodiversity and growth policies. SUSTAIN aims to help local and national governments to meet their goals for integrated land and water planning that leads to effective action on SDG implementation (see fig 3). SUSTAIN supports the relevant priorities for action set for example by basin water agencies and regional administrations to ensure that the initiative is able to facilitate demand-driven partnerships with civil society and business. The initiative is helping to build capacities in local and national governments for the landscapes approach, integrated natural resource governance and inclusive green growth.

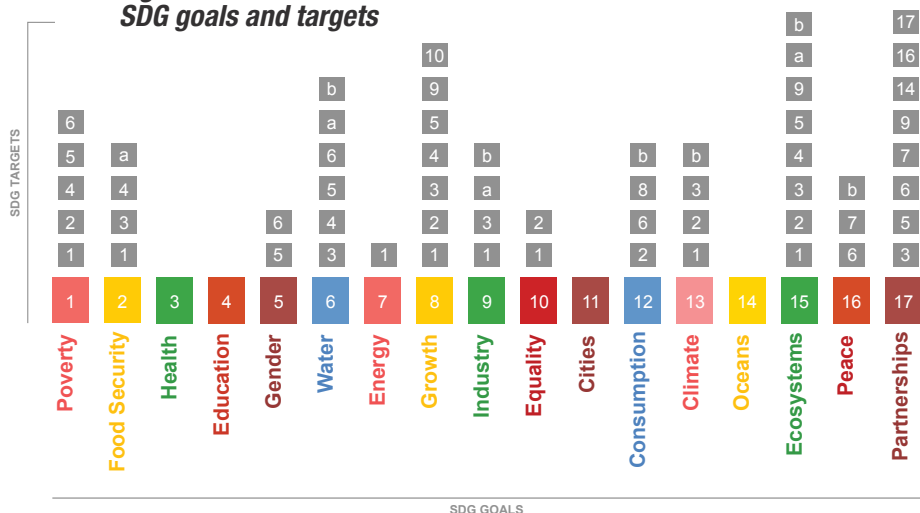
## Empowering Civil Society

SUSTAIN is empowering civil society to negotiate with investors and participate in decision making processes, including through rights-based approaches. SUSTAIN's peer-to-peer learning platform targets exchange of knowledge among civil society and local and national governments, investor networks and knowledge institutes. The goal is to encourage up-scaling of best practices. The platform is focused on water and food security, climate-smart agricultural practices and climate change resilience, as well as new investments and business partnerships.

## Further links:

SUSTAIN-Africa Initiative: [www.sustaininitiative.org](http://www.sustaininitiative.org)  
 IUCN Water Programme: [@IUCN\\_Water](http://www.iucn.org/water)  
 SNV: [@SNVworld](http://www.snv.org)  
 African Wildlife Foundation: [@AWF\\_Official](http://www.awf.org)  
 IUCN National Committee of the Netherlands: [@IUCNNL](http://www.iucn.nl)

**Fig 3: Contributions of SUSTAIN-Africa to SDG goals and targets**



[sustainabledevelopment.un.org/sdgs](http://sustainabledevelopment.un.org/sdgs)

## The Vision of SUSTAIN-Africa

### Expected Results

SUSTAIN aims to demonstrate that sustainable and inclusive pathways to growth are not only more beneficial to communities and the environment, but also make economic and business sense. Expected outcomes will contribute to SDG implementation:

#### At the local/demonstration landscape level

- strengthened institutions integrate water, land and ecosystem management
- increased water security, climate change resilience, and food security
- greater inclusion of rural communities and smallholders in economic growth
- smallholder farmers and communities empowered to negotiate with investors and in decision-making processes

#### At the corridor/national level

- new value chains combine investment in ecosystems and diversified production systems increase opportunities for enterprise, livelihoods and income
- policies and strategies incentivise sustainable and inclusive business practices

#### Africa-wide and internationally

- policy and practice in the public and private sectors are mainstreaming evidence-based strategies for green and inclusive growth.



[www.sustaininitiative.org](http://www.sustaininitiative.org)

## For more information, please contact:

Michael Nkonu - Programme Coordinator Tanzania - [michael.nkonu@iucn.org](mailto:michael.nkonu@iucn.org)  
 Isabel Ramos - Programme Coordinator Mozambique - [isabel.ramos@iucn.org](mailto:isabel.ramos@iucn.org)  
 Marie Parramon-Gurney - Technical Coordinator Sth Africa - [marie.parramon@iucn.org](mailto:marie.parramon@iucn.org)  
 Mark Smith - Director Global Water Programme IUCN Headquarters - [water@iucn.org](mailto:water@iucn.org)  
 Mark van der Wal - SUSTAIN lead for IUCN NL - [mark.vanderwal@iucn.nl](mailto:mark.vanderwal@iucn.nl)

