



Photo credits: Sergio Garrido, IUCN

ECUADOR-PERU TRANSBOUNDARY BASINS

Background

Ecuador and Peru share nine transboundary basins, three draining to the Pacific Ocean and six toward the Amazon River. Formal water cooperation between these countries started in 1971, with agreements and projects to increase irrigated agricultural surface. Today, both countries are working on making the Binational Commission and the Basin Committees jointly take actions to address urgent water problems such as scarcity and pollution.

Key achievements to date

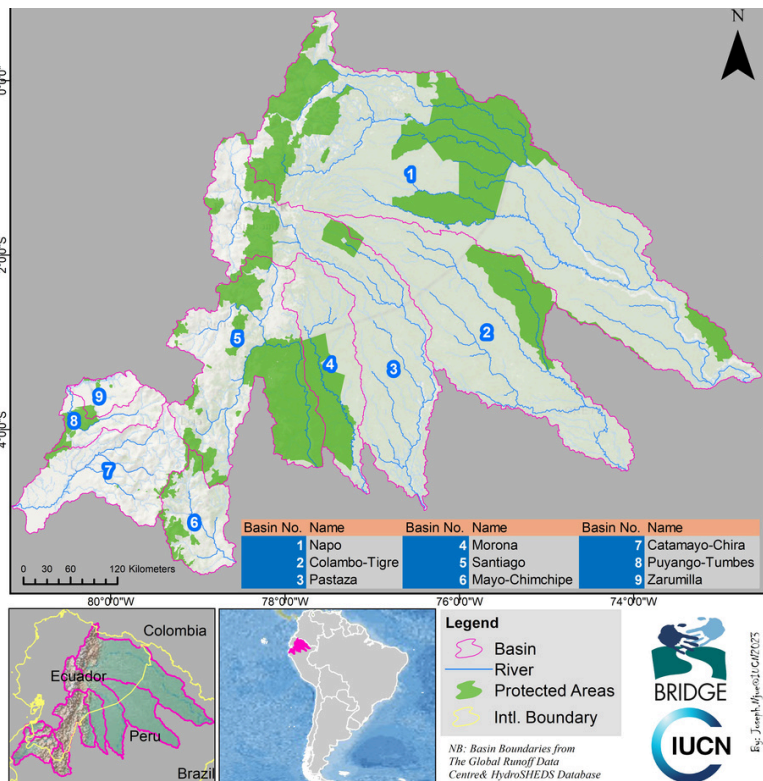
- Creation of the Binational Commission for the IWRM of the nine transboundary basins shared between Ecuador and Peru and ratification of its statute.
- Strengthened capacity of a Champions Network to mobilise water cooperation and benefit sharing.
- Ministerial agreement to include Nature-based Solutions into national hydraulic planning in Ecuador.

BRIDGE implementation

BRIDGE has been operating in these basins since 2012. It has focused on building the enabling environment for water cooperation. At the national level, BRIDGE has assisted in the diplomatic dialogues that led towards the creation of the Binational Commission. At the sub-national level, it has focused on capacity strengthening for sustainable water management.

Basin objectives for Phase 5

- Make the Binational Commission operational and support the preparation of an action plan and resource mobilisation strategy
- Establish at least two Basin Committees and their respective basin management plans.
- Strengthen the role of women and youth in water management.



Basin at glance

- Total area (km²): 272,098
- Population: 5.5 million
- Climate zone: Tropical, with altitudinal variations
- Rainfall (mm/yr): 500 to 5000
- Countries sharing: Ecuador and Peru
- BRIDGE operating in the basin since: 2012

CROSS-SECTORAL AND INSTITUTIONAL COLLABORATION

Ecuador: Ministry of Foreign Affairs and Human Mobility (MREMH); Ministry of Environment, Water and Ecological Transition (MAATE)

Perú: Ministry of Foreign Affairs (MRE); National Water Authority, part of the Ministry of Agricultural Development and Irrigation (ANA); Ministry of Environment (MINAM)

These organisations have negotiated the creation and statute of the Binational Commission, moving towards having an operational agreement for IWRM at the transboundary level. BRIDGE has assisted both governments with a range of activities that move from capacity strengthening, to legal technical assistance, to dialogue facilitation.

Looking forward, BRIDGE will support the Binational Commission to be operative at the local level, strengthening capacities of local actors to constitute the local basin committees.

Additional information

BRIDGE website:
www.waterandnature.org/initiatives/bridge

Water Law and Governance website:
www.waterlawandgovernance.org/bridge

LinkedIn:
[IUCN Water and Wetlands](https://www.linkedin.com/company/iucn-water-and-wetlands)

BRIDGE contacts

Maria Laura Piñeiros

Laura.Pineiros@iucn.org
 BRIDGE Project Coordinator - Southern American Region